



## Route 9/35, Main Street Bridge

Public Information Center  
Preliminary Engineering

June 17, 2024 to June 28, 2024



**Michael Baker**  
INTERNATIONAL

# Presentation Overview

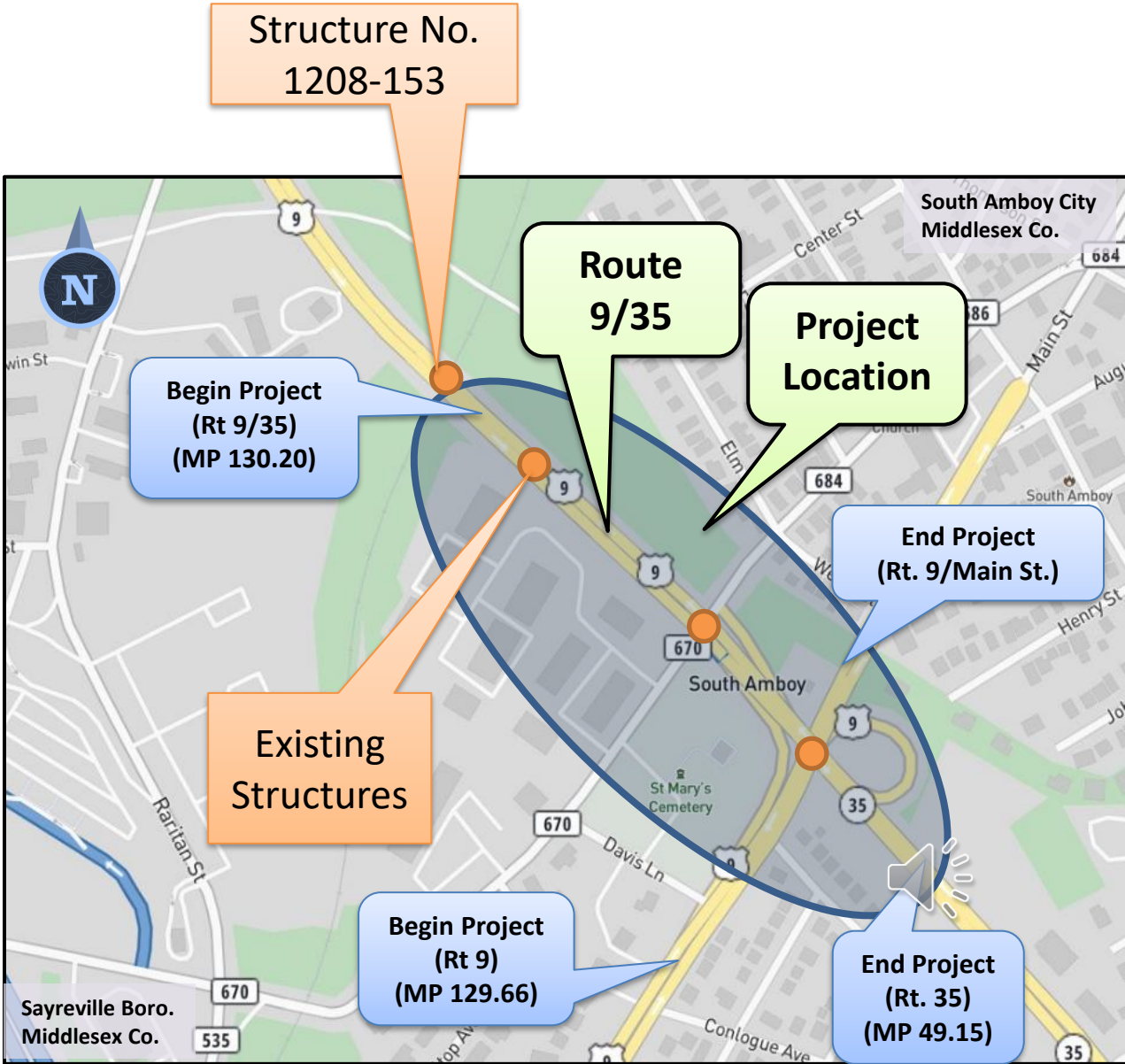
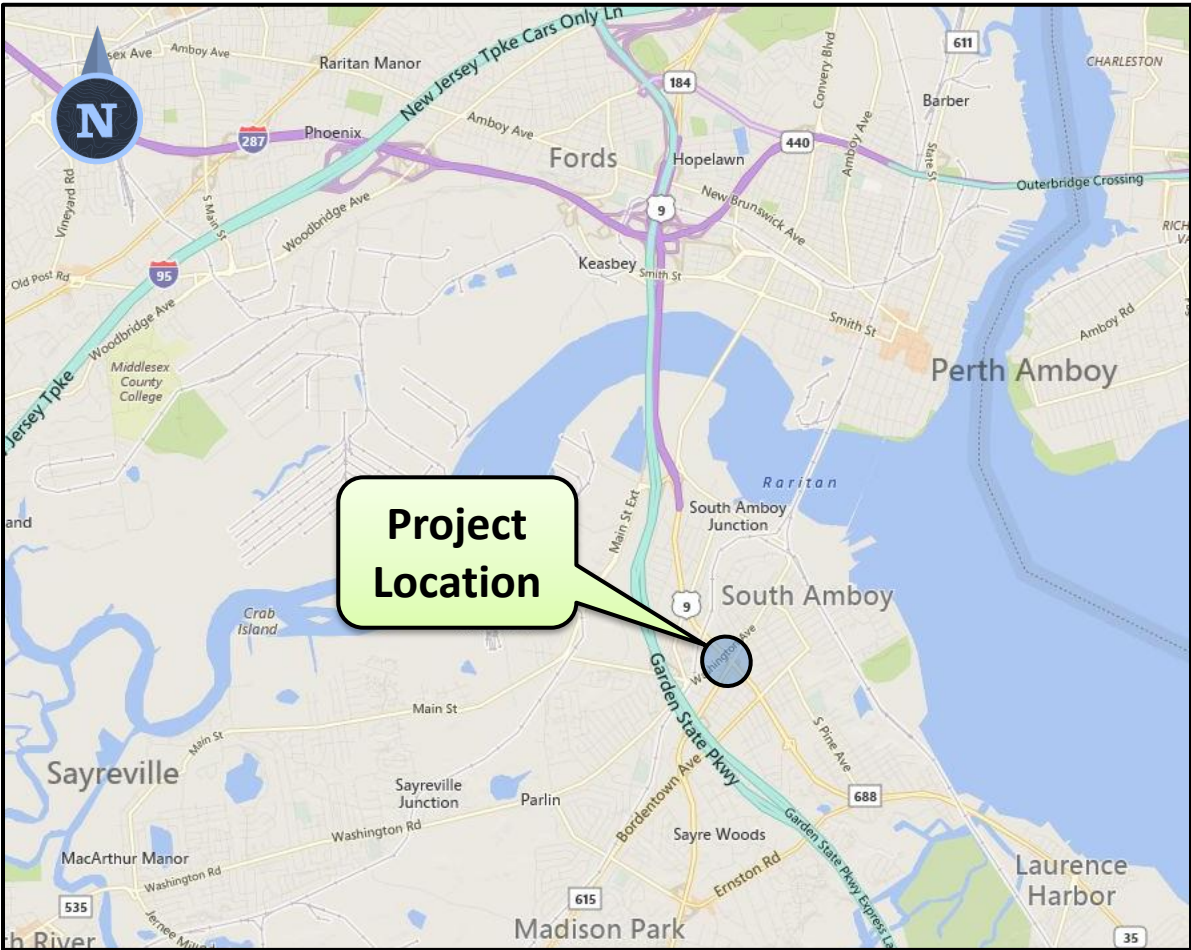


**Michael Baker**  
INTERNATIONAL

- **Project Location**
- **Existing Conditions**
  - Roadway
  - Safety/Operations
  - Bridge
  - Environmental Constraint
- **Purpose and Need**
- **Proposed Preliminary Design**
- **Project Delivery Process**
- **Questions/Feedback**

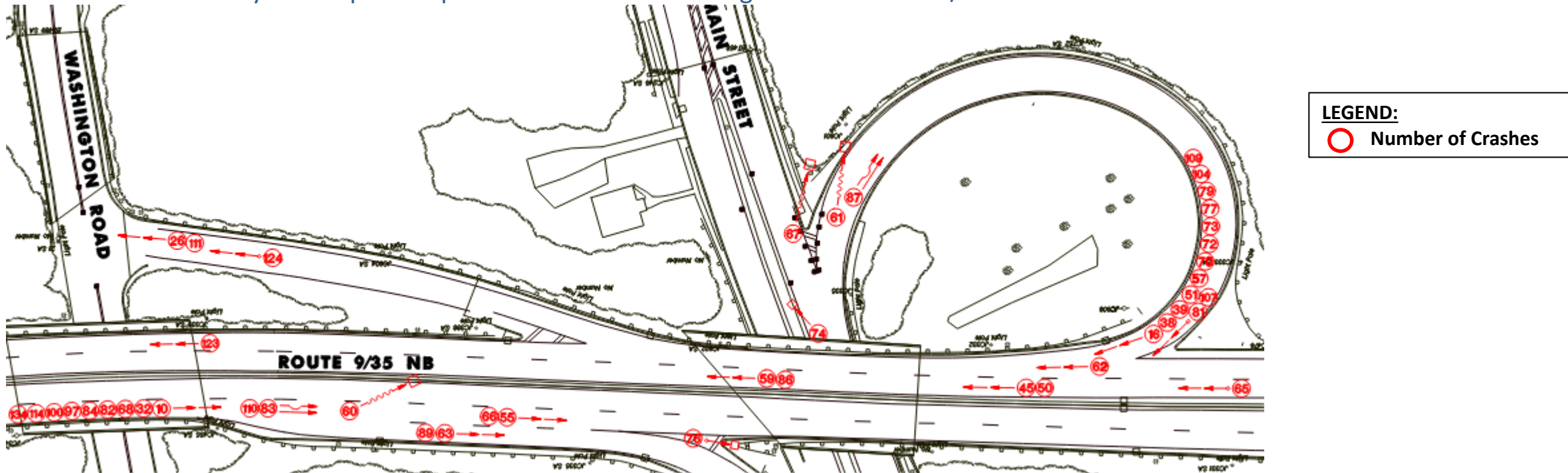


# Project Location



## Purpose and Need

- Enhance Safety and Improve Operations at the Interchange of U.S. Route 9 / Main Street and N.J. Route 35



- **Highest Priority Rating and #1 on Congestion Relief Project List**
- **Travel Time Index (TTI)**
  - US 9 / NJ 35 Northbound – 5.5
  - US 9 / NJ 35 Southbound – 1.5
  - (i.e. it takes 5.5x longer than normal [1])
  - (Data From CD Phase)

- **Total crashes reported = 534 (2016-2021)**
- **Average Crashes/Year = 107 (2016-2021)**
- **MP 129.60-129.92 Safety Score = 10**
- **MP 129.92-130.23 Safety Score = 7**

- Safety Score: 0 = No Crashes, 10 = Worst Score -2011-2013 data (similar patterns thru 2018)



# Existing Conditions



**Michael Baker**  
INTERNATIONAL



**South Amboy**  
**Middlesex County**

**Washington  
Avenue Ramp to  
be Removed**

**Str. No. 1208-150  
(Built: 1936)**

**Str. No. 1208-151  
(Built: 1936)**

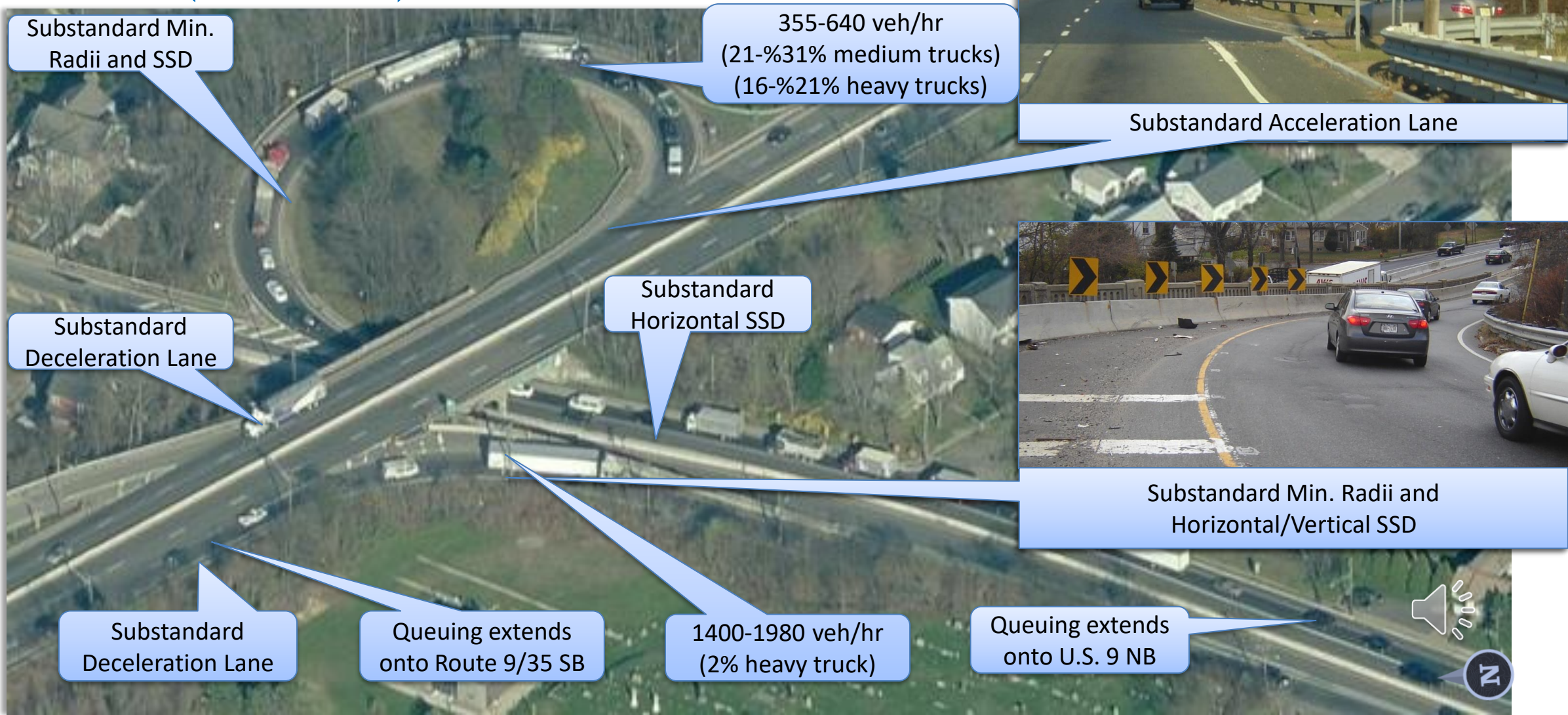
**Str. No. 1208-152  
(Built: 1936)**

**Str. No. 1208-153  
(To Remain)**

**Sayreville**  
**Middlesex County**

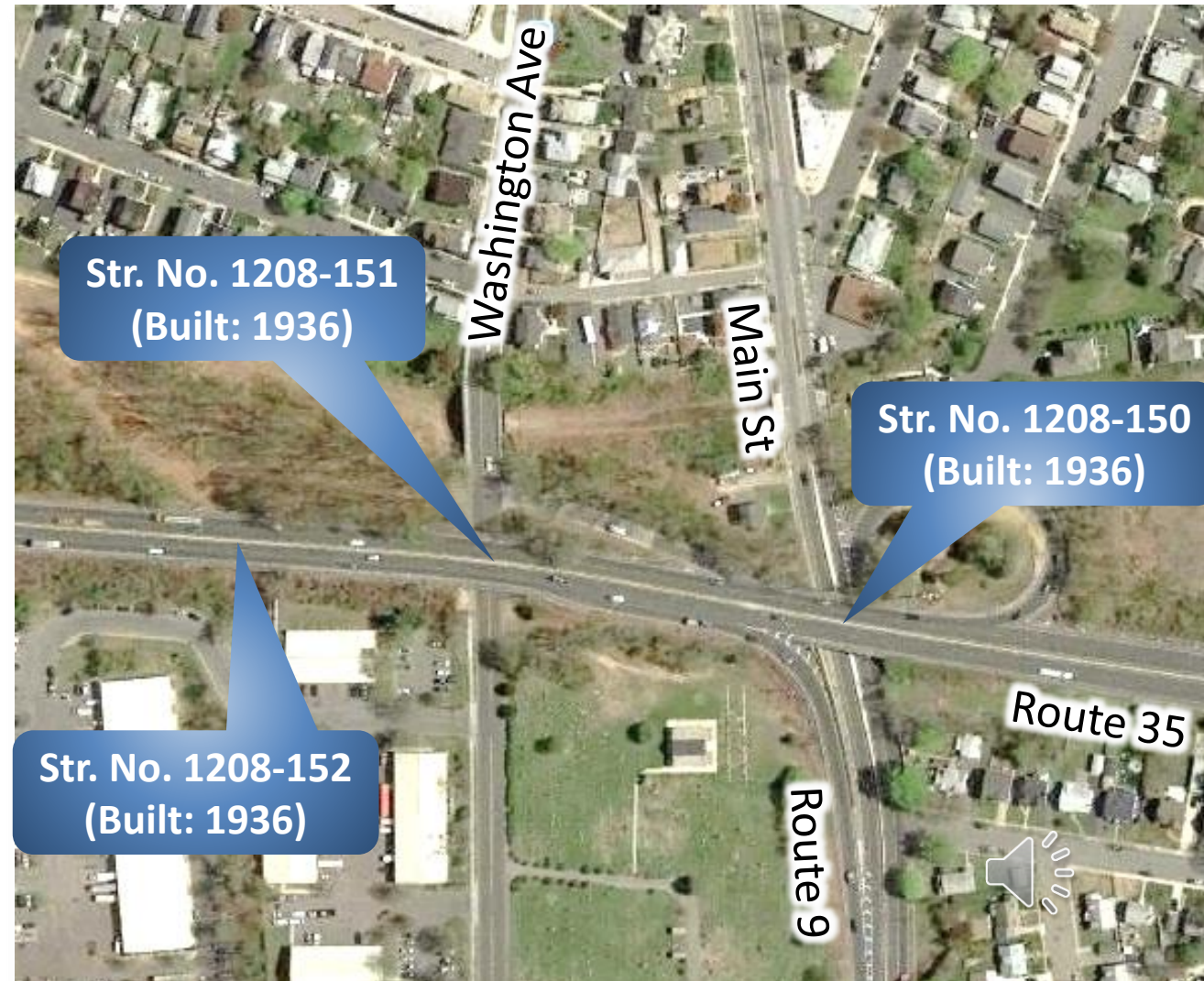
# Existing Conditions (Cont.)

## U.S. 9 (Main St) and Route 9/35



## Bridges

- Built in 1930s
- Historical Analysis (July 2021)
  - 1208-150
    - Condition = Satisfactory
    - Sufficiency Rating = 70.4/100
    - **Ranking = Priority 3, Medium**
  - 1208-151
    - Condition = Fair
    - Sufficiency Rating = 51.0/100
    - **Ranking = Priority 2, High**
  - 1208-152
    - Condition = Fair
    - Sufficiency Rating = 56.3/100
    - **Ranking = Priority 2, High**
- Ranking: 1=high priority, 5=low/no priority repair



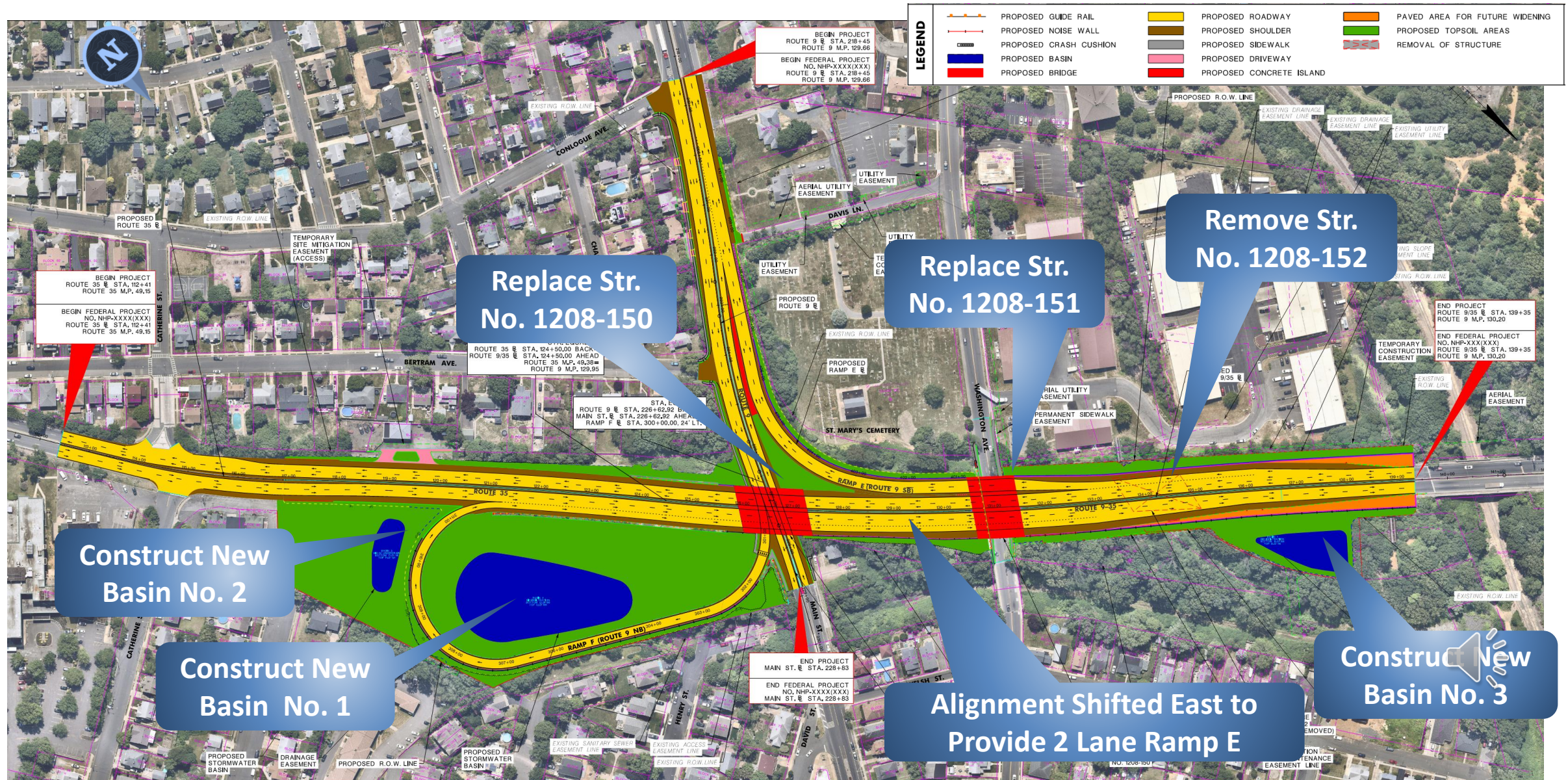
[illegible]

	Wetland A - Ordinary Resource Value		Historic District
	State Open Water B		Existing Bridge
	50' Riparian Zone		Proposed Pavement
	NJGS Historic Fill		

- 



**Michael Baker**  
INTERNATIONAL

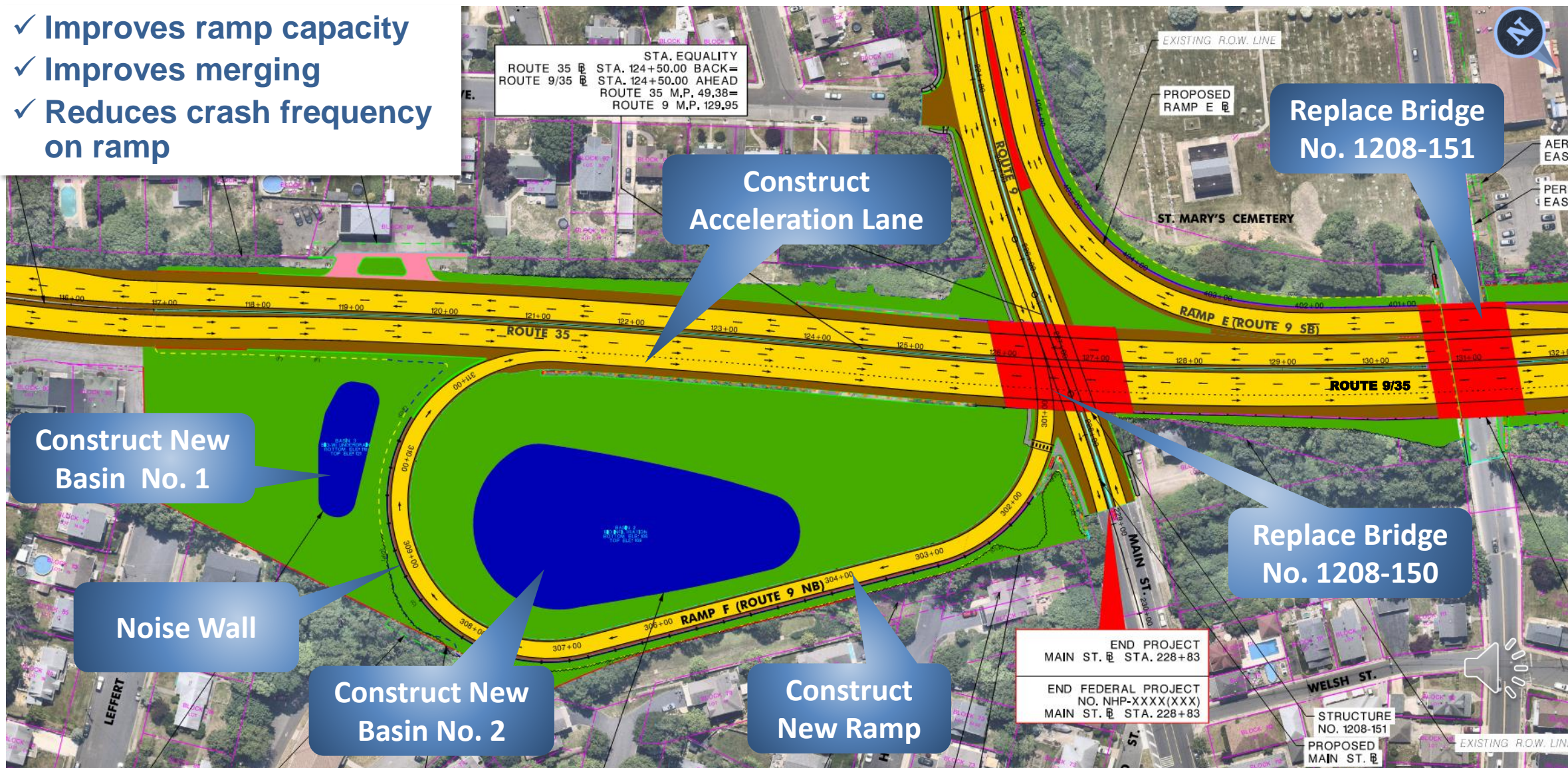


# Northbound Ramp/ Loop Ramp / Ramp F



Michael Baker  
INTERNATIONAL

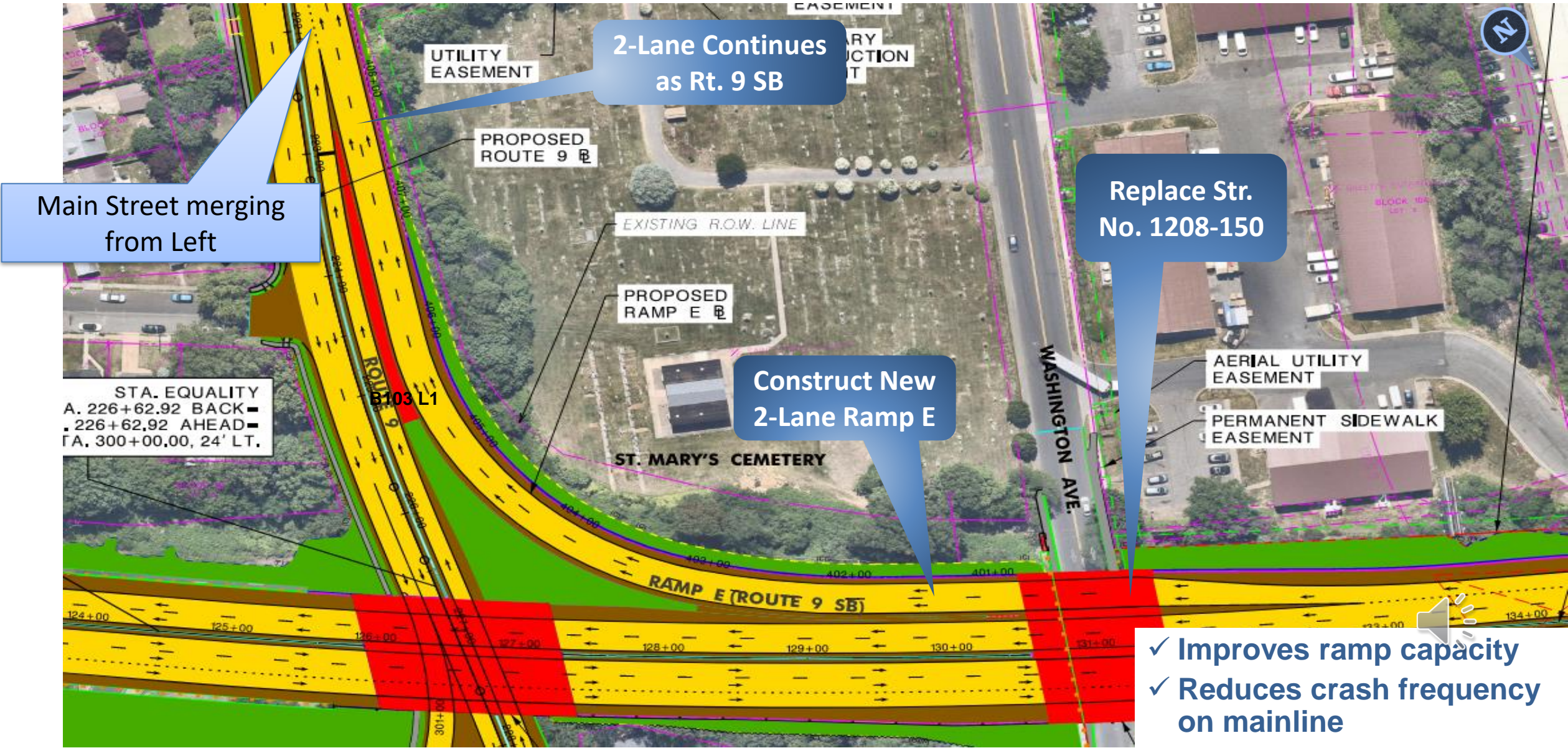
- ✓ Improves ramp capacity
- ✓ Improves merging
- ✓ Reduces crash frequency on ramp



# Southbound Ramp / Ramp E



Michael Baker  
INTERNATIONAL

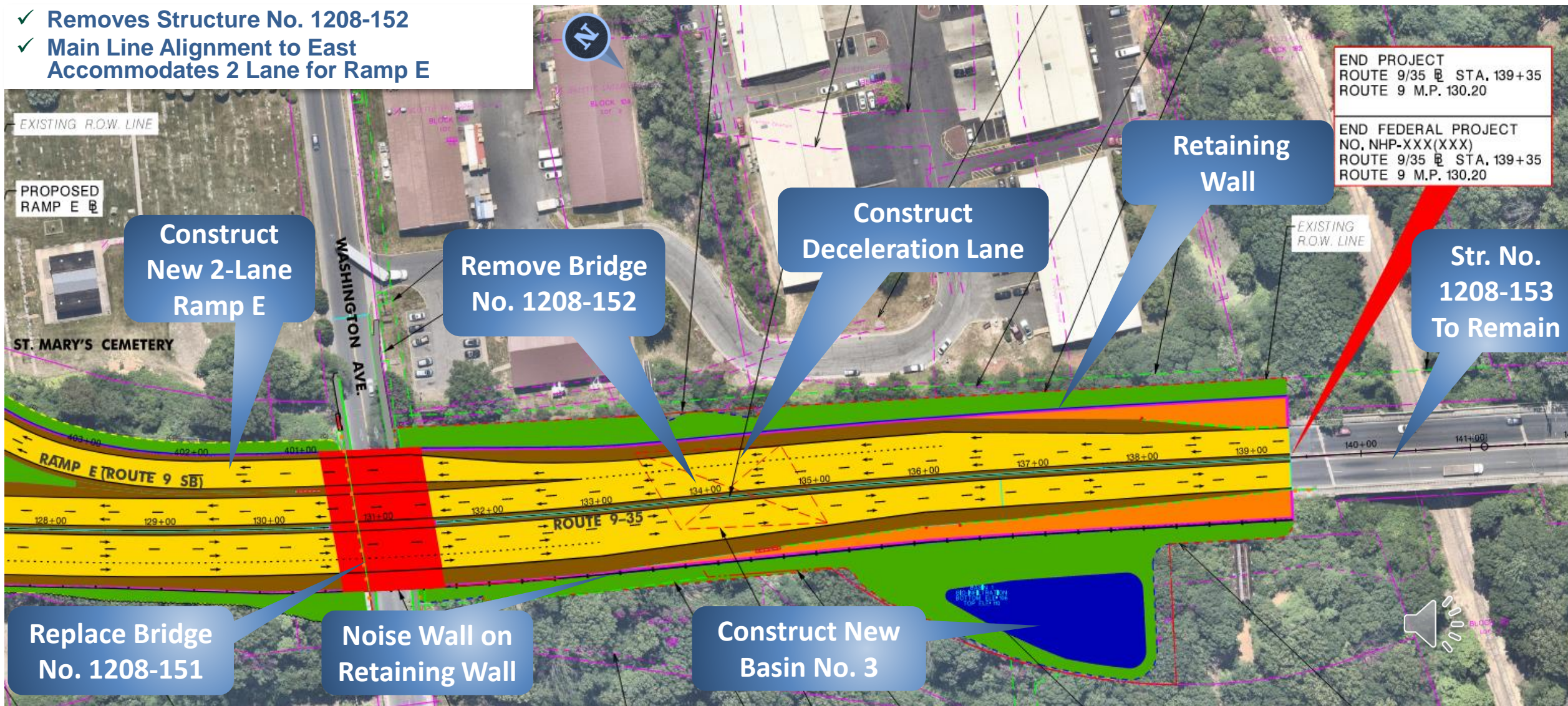


# Northern Limit of Project



**Michael Baker**  
INTERNATIONAL

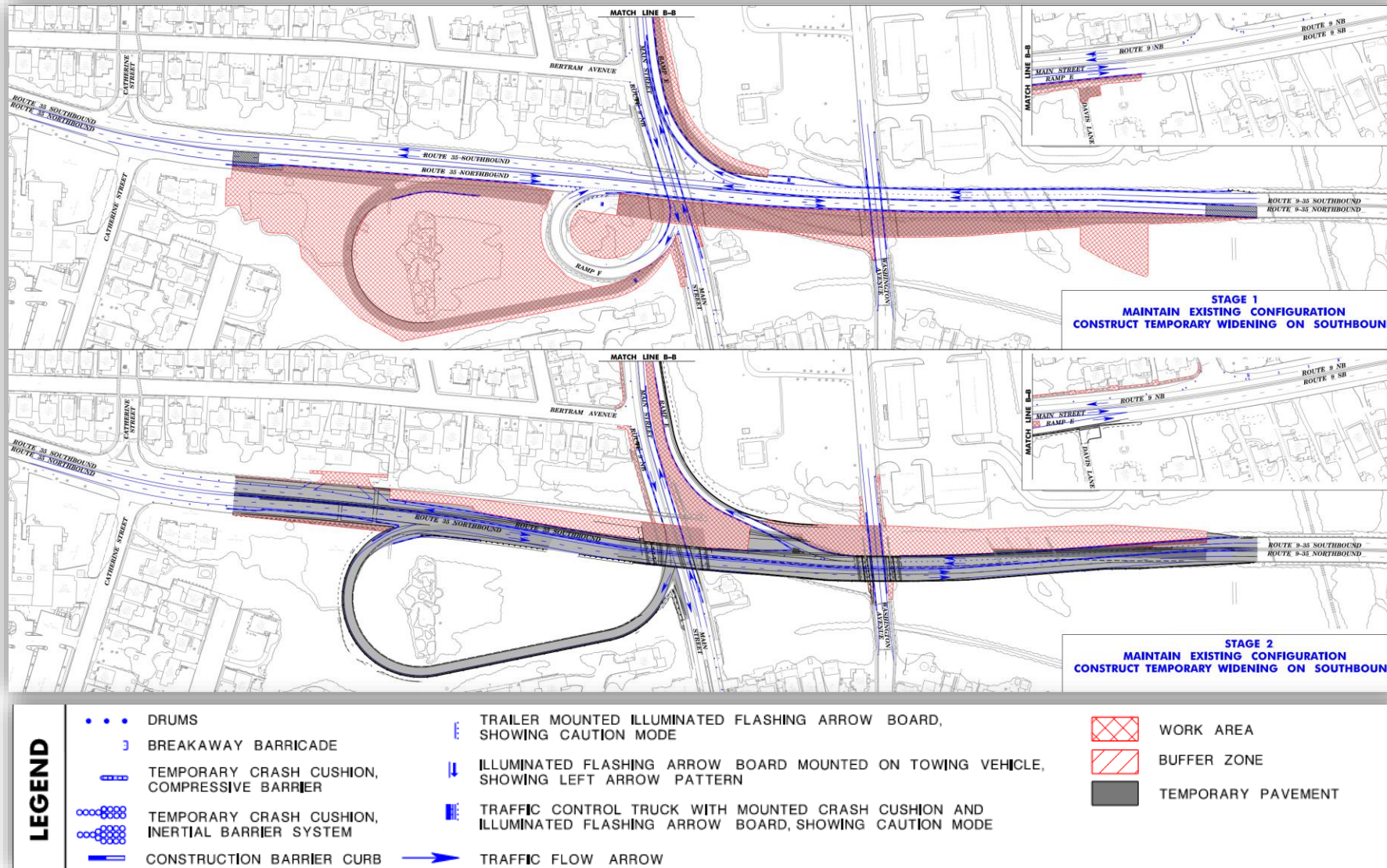
- ✓ Removes Structure No. 1208-152
- ✓ Main Line Alignment to East Accommodates 2 Lane for Ramp E



# Construction Staging



Michael Baker  
INTERNATIONAL



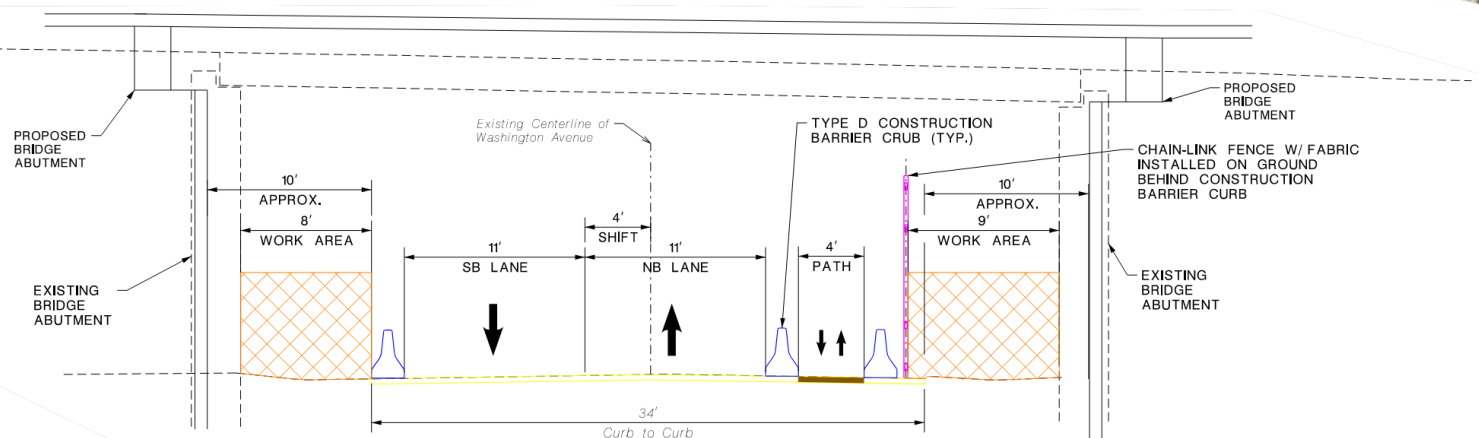
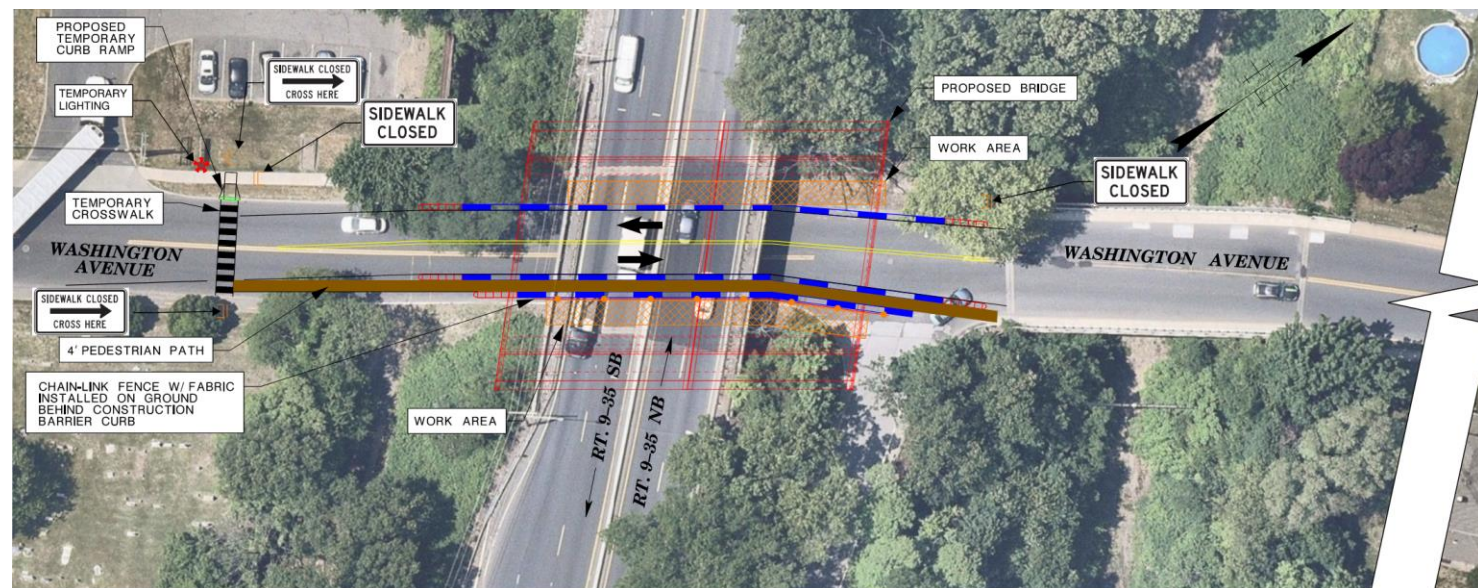
## STAGE 1

- Shift Mainline Traffic to the West side.
- Construct Mainline widening on East side

## STAGE 2

- Shift Mainline Traffic to newly constructed east half.
  - Construct Mainline widening on West side.
- The proposed shifted Mainline alignment allows for maximum offline construction and the Bridge replacements can be completed in 2 stages.

## Pedestrian Accommodation at Washington Avenue



**PEDESTRIAN ACCOMMODATION AT  
WASHINGTON AVENUE DURING CONSTRUCTION**



## Estimated Project Schedule

- Construction is expected to commence in July 2027, with a 33-month construction duration.

Milestone	Date
Final Design Complete	May 2027
Construction Begins	July 2027
Construction End	March 2030



# Project Delivery Process



**Michael Baker**  
INTERNATIONAL

Concept Development	Preliminary Engineering	Final Design / Right of Way Acquisition	Construction
<b>Project Progress</b>			
Purpose and Need Statement	Approved Design Exception Report	Construction Contract Document and PS&E Package	Completed Construction
Data Collection and Environmental Screening Report	Cost Estimates (Final Design ROW and Construction)	Environmental Reevaluations	As-Built
Selection of Preliminary Preferred Alternative	Approved Environmental Document	Environmental Permits	Update and Finalize the Design Communications Report
NEPA Classification Concept Development Report	Approved Project Plan	Acquisition of ROW	Close-Out Documentation
Create Design Communications Report	Preliminary Engineering Report	Update Design Communications Report	
	Update Design Communications Report		



## QUESTIONS / COMMENTS / SUGGESTIONS

For further information, please contact:

Meredith Hammond

NJDOT office of government and community relations

PO box 600, Trenton, NJ 08625

Phone: 609-963-1982

E-mail: [Meredith.hammond@dot.nj.gov](mailto:Meredith.hammond@dot.nj.gov)

Thank you!

